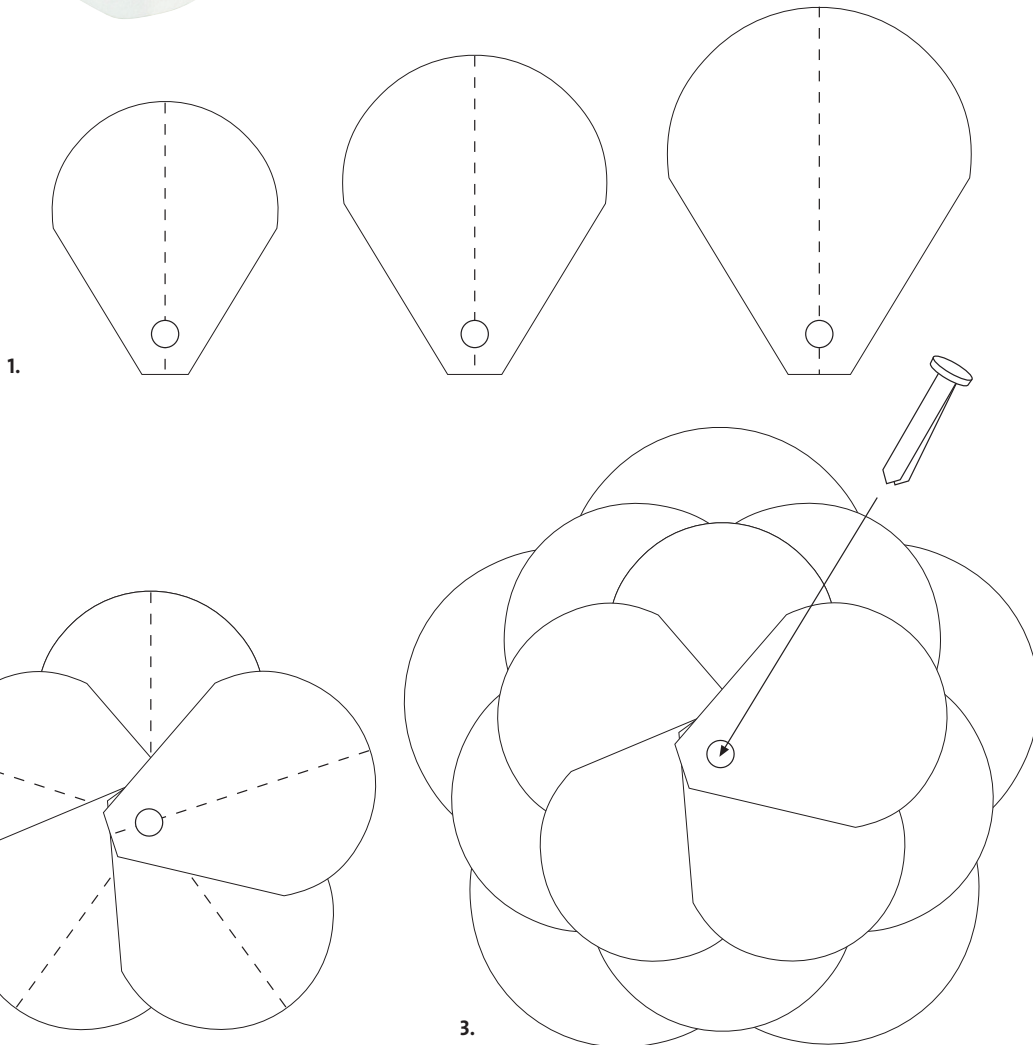


**ISSUE 19: TABLE THREE WAYS: PETAL POWER | FLOWER TEMPLATE**

1. Trace the three petal shapes on to cardboard and cut out each one. Using the cardboard petal templates, trace five of each size on to the paper of your choice. Using the dashed line as a guide, fold each paper petal in half to create a crease. Using the circle as a guide, punch a 4mm hole in to each paper petal.
2. Align the five petals from each size and space evenly to create a circle.
3. Juxtapose the position of the next size petals so that they sit between the spaces created by the smaller petals. With all of the holes carefully aligned, insert a paper fastener and secure at the back of the flower. Recreate the petals and plump into shape if necessary.

Continued on the next page...



ele  
wedding  
style guide

**ISSUE 19: TABLE THREE WAYS: PETAL POWER | FLOWER TEMPLATE**

4. Choose a piece of lightweight paper that you would like to use for the centre of the flower. Measure a strip 150mm long x 10mm high. Using sharp scissors or cutting blade, trim a fringe into the strip, stopping 4mm from the top.
5. When trimmed, carefully wrap the strip of paper tightly around a pencil and hold in position for a minute to encourage the paper to hold its shape when removed. Secure the wound paper with a small piece of clear or invisible adhesive tape. Carefully remove from the pencil, ensuring the wound paper retains its shape.
6. Position the wound paper circle, with cut fringe facing up, on to the brad of the paper fastener. You may need a small dab of clear-drying glue to hold them in to position. If desired, cut a leaf shape from the same paper you used for the petals, or in a contrasting colour and use the leaf as a placecard, writing guest's names on each one.

