

elle
wedding
style guide

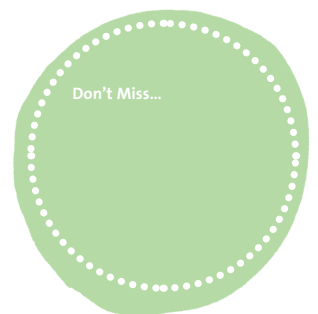
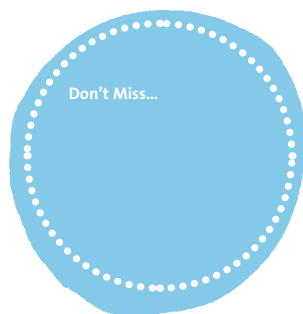
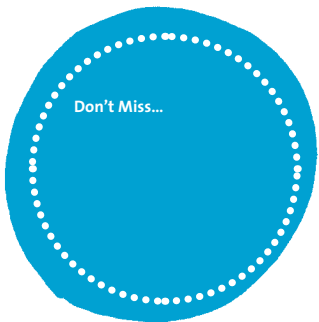
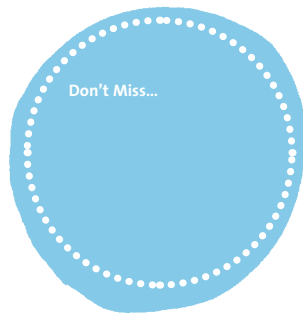
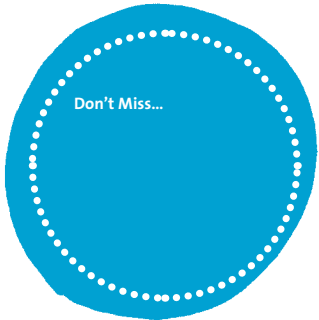
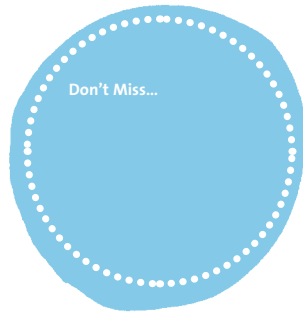
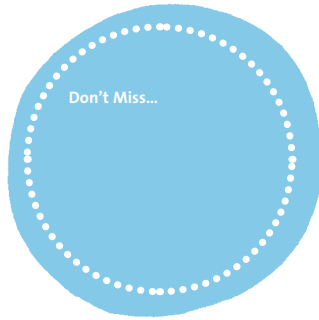




ISSUE 19: BON VOYAGE | MAP LABEL TEMPLATE

1. Print out as many copies as you need on to self-adhesive label paper.
2. With sharp scissors, trim around each label.
3. Hand them out to guests to note their favourite travel stops and position them on a map of the world – you can download ours, found on one of the following pages of this pdf.

Continued on the next page...





ISSUE 19: BON VOYAGE | PASSPORT LABEL TEMPLATE

1. Print out as many copies as you need on to self-adhesive label paper.
2. With sharp scissors, trim around each label.
3. Write your guests' names on to each label and place on to the front cover of the passport, found on one of the following pages of this pdf.

Continued on the next page...





ISSUE 19: BON VOYAGE | PASSPORT COVER - OUTER TEMPLATE

1. Print out as many copies as you need on to the heaviest weight paper stock compatible with your printer. If desired, flip the paper around and re-feed into your printer to print the other side (inner template found on the next page of this pdf) on to the page.
2. Using the dashed guide, score a line which will be the centre of the passport cover.
3. Using the trim marks, cut the passport cover to size with a sharp cutting blade.
4. Fold the cover into half, using the score line as a guide

Continued on the next page...





ISSUE 19: BON VOYAGE | PASSPORT COVER - INNER TEMPLATE

Continued on the next page...





ISSUE 19: BON VOYAGE | TRAVELLERS' TIPS TEMPLATE

1. Print out as many copies as you need on to light weight paper.
2. Using the trim marks as a guide, cut the sheet to size using a sharp cutting blade.
3. Place one sheet inside each passport cover (found on the previous pages of this pdf) and have guests complete and leave for the couple.

Continued on the next page...

A template for a 'TRAVELLERS' TIPS' form. The form is set against a background of light blue, overlapping, wavy lines. It includes several sections for text input, each with a label in a different color. The labels are: 'Document/Documenter' (blue), 'Name/Nom' (blue), 'Must See' (green), 'Don't Leave Home Without' (green), 'Best Meal' (green), 'Sight Worth Seeing' (green), 'Worth Splurging' (green), and 'Best Advice' (green). The form is framed by four L-shaped corner marks, indicating where to cut it out.



ISSUE 19: BON VOYAGE | MENU TEMPLATE

1. Print out as many copies as you need on to light weight paper.
2. Using the trim marks as a guide, cut the sheet to size using a sharp cutting blade.
3. Handwrite your menu, making special mention of which country inspired each dish.
4. Place a menu in each guest's passport cover (found on the previous pages of this pdf).

Continued on the next page...



ISSUE 19: BON VOYAGE | MAP TEMPLATE

1. Print out this map, enlarging it to the size you'd like. We printed ours out at this size, using the paper as wrapping paper for favours. We also printed it out extra large, as tiles which we pieced together and then traced on to butcher's paper which we used as a table runner.

